

How do we know about the layers?

(think about the mystery boxes!)



Earthquakes create:

Seismic Waves,

----->

----->

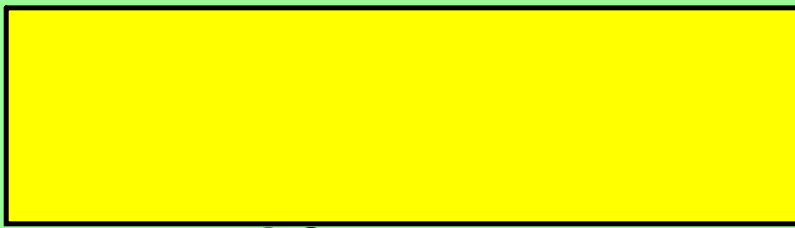
----->



1. Primary Waves (P waves)

a. Fastest Wave

b. Compressional waves

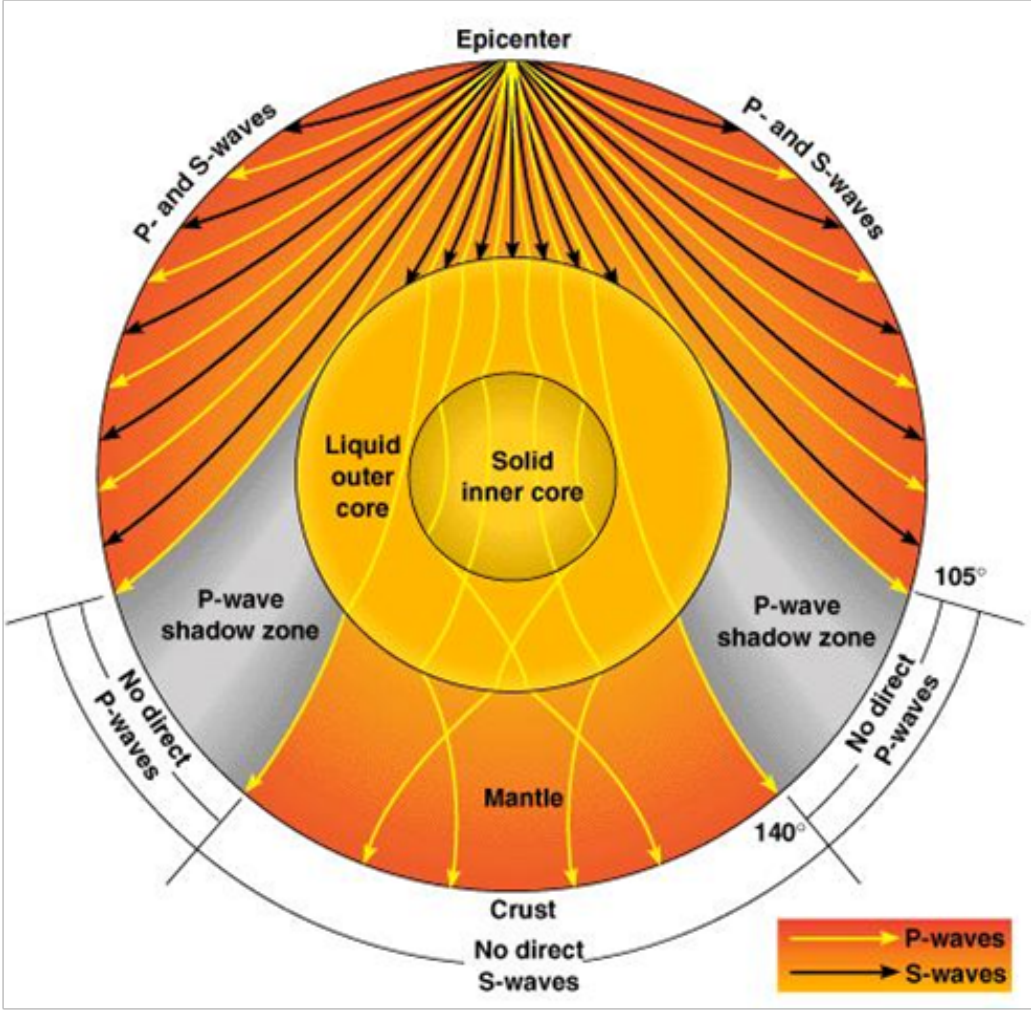


2. Secondary Waves (S waves)

a. Slower wave, cause most damage

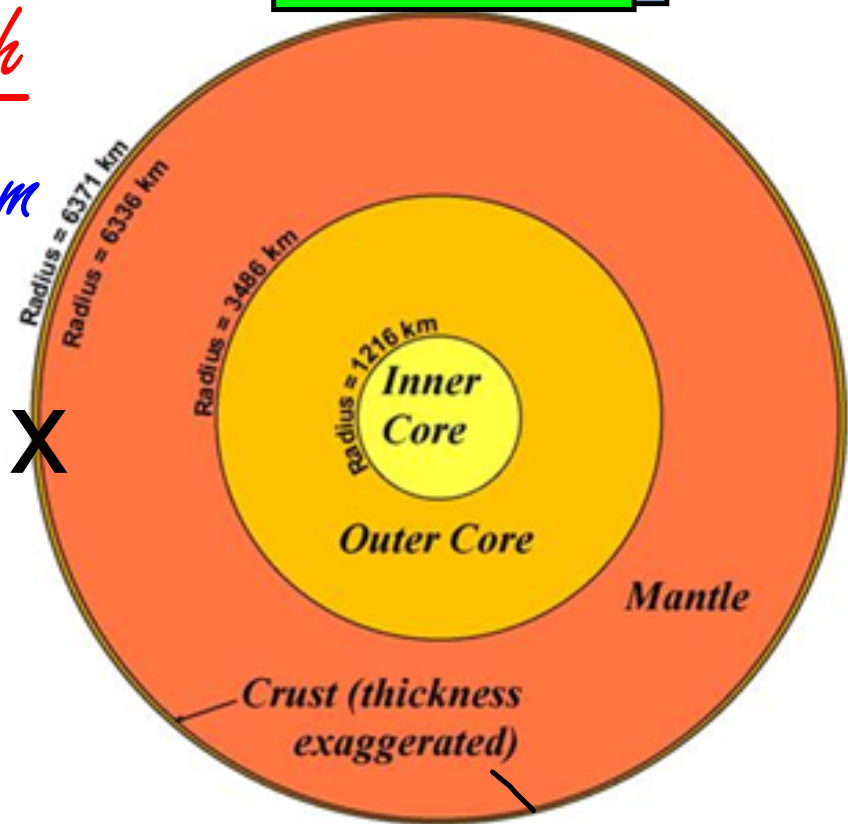
b. Transverse Waves





These waves **refract**, or bend, when they travel through different layers inside the planet.

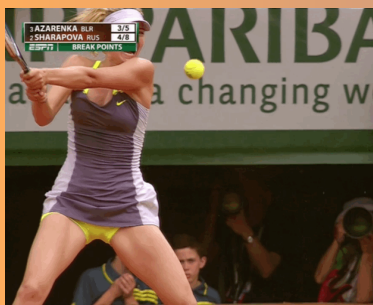
a seismograph  
records them



Draw an example of a wave traveling from the Earthquake (X) and exiting the Earth on the other side...

Which layer do they travel  
SLOWEST through?

---



Which layers do the  
travel FASTEST  
through?

---

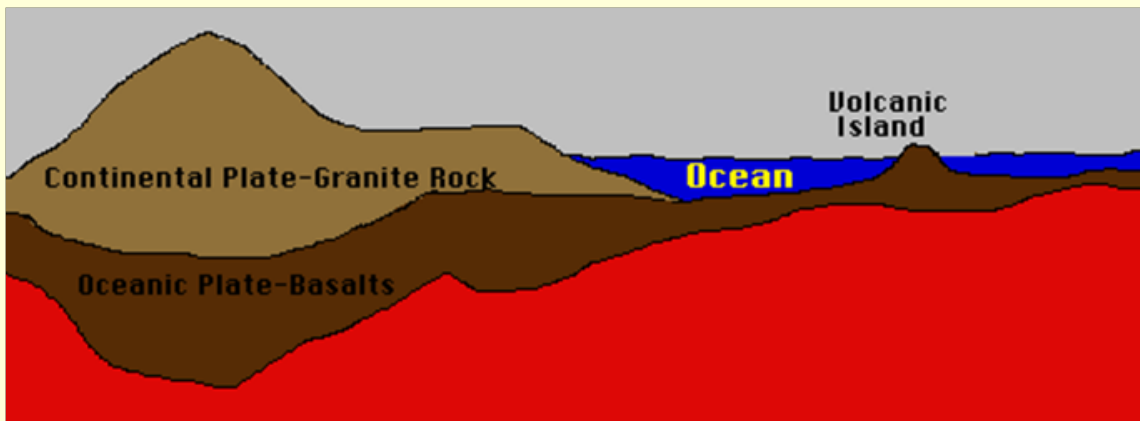


## Layers of the Earth

1.) Lithosphere is a thin layer of rock



a. This layer is



What kinds of things can change  
what the surface of the Earth looks  
like????

i.

ii.

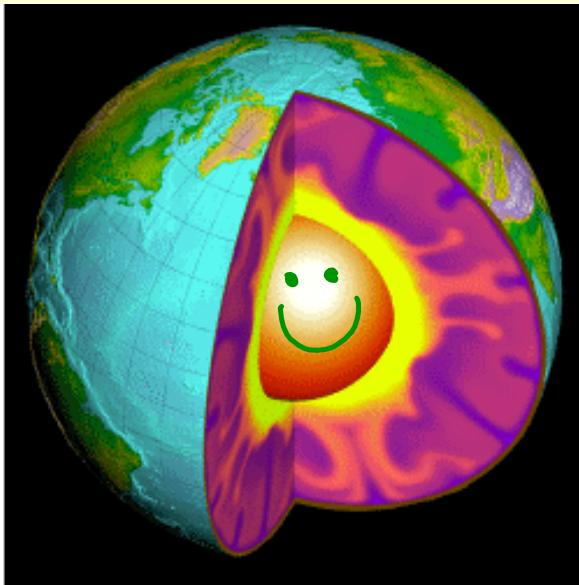
iii.

iv.

v.

2.) Mantle is another layer of rock,  
but it's very HOT !!!!

a. This layer is mushy or bendable  
like play-dough

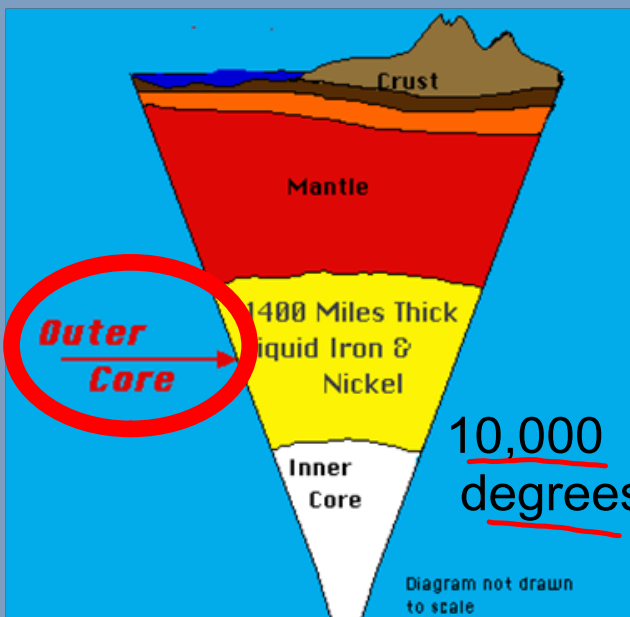




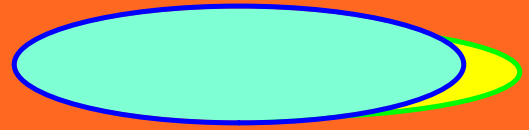
### 3.) Outer Core:

Is a layer of Liquid metals:

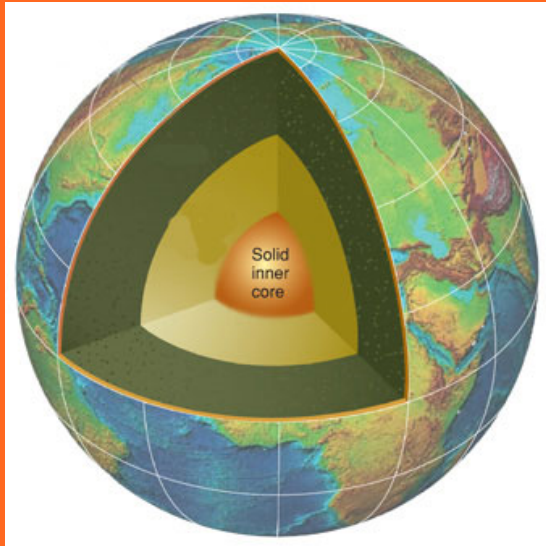
like Nickel and Iron



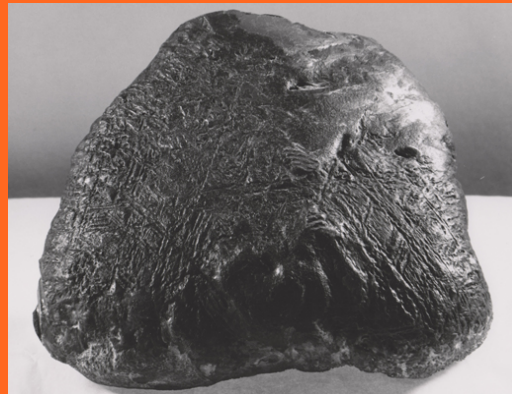
## 4.) Inner Core

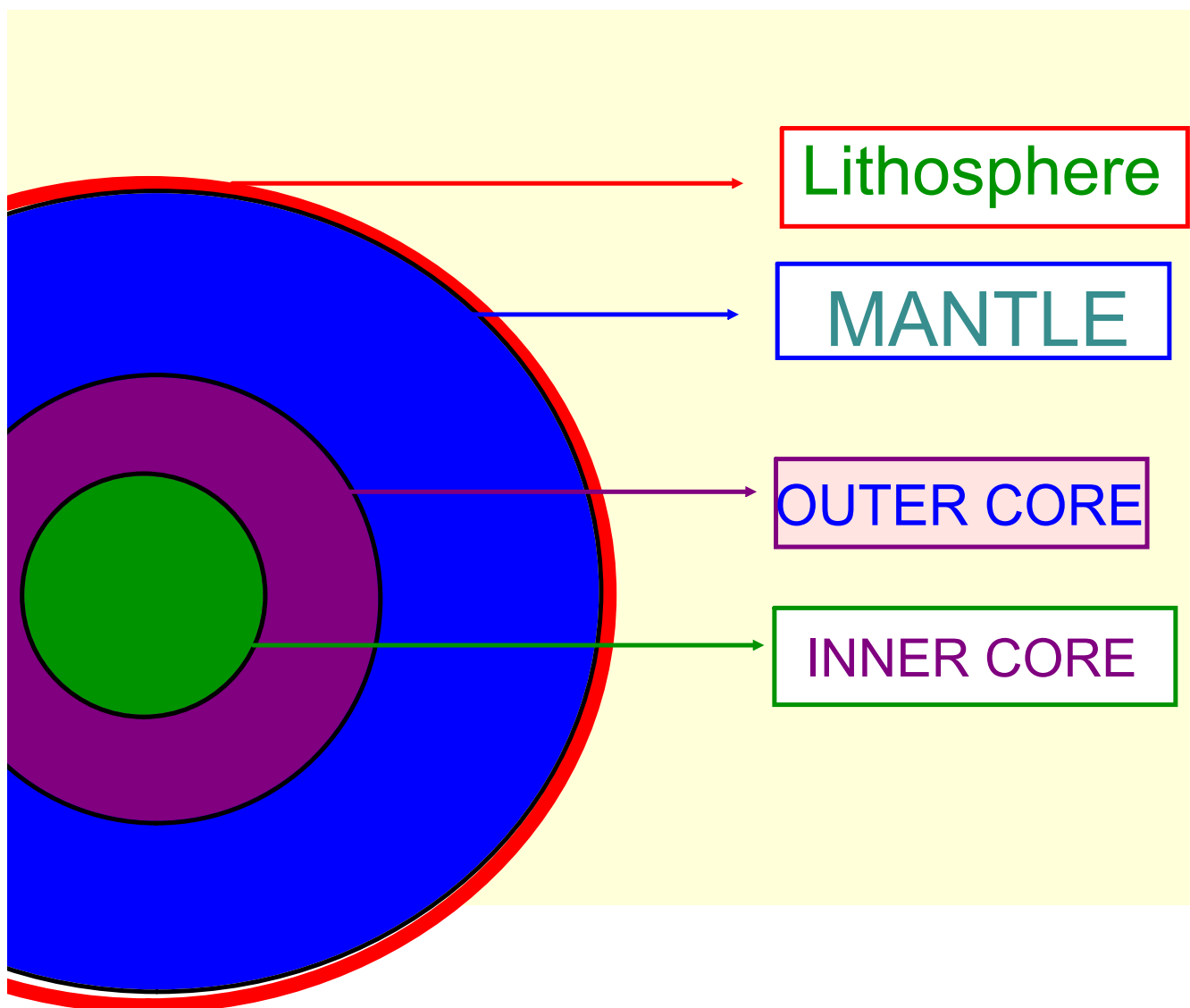


A layer of solid Iron



13,000 degrees !





## Attachments

---



seismograph



waves